



AGENDA

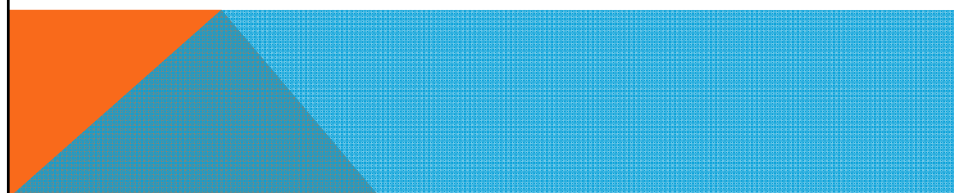
Consolidated State Performance Report

- Purpose
- Importance
- Data Collection

Rationale for Improvements

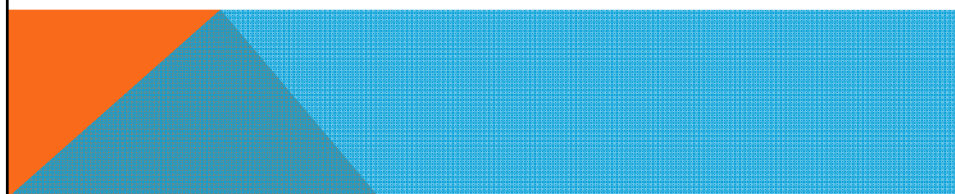
Next Steps for Data Collection

Questions



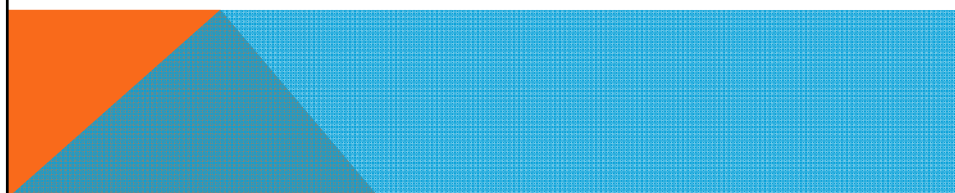
PURPOSE OF CSPR

- Encourage the integration of State, local, and federal programs in comprehensive planning and service delivery
- Enhance the likelihood that the State will coordinate planning and service delivery across multiple State and local programs



IMPORTANCE OF CSPR DATA

- Data used to report effectiveness of Title I, Part D (TIPD) programs
- Accurate data upholds the integrity of the Florida's Automated Student Information System



CSPR DATA COLLECTION

Programs and
Facilities

Students
Served

Transition
Services

Academic and
Vocational
Outcomes

Academic
Performance

WHERE DO WE GET THE DATA?

- Districts submit data into the online database for Survey 5

Survey 5 Due Date

State Processing

Final Update/
Amendment Date

August 1, 2014

July 28 - August 29, 2014

February 27, 2015

WHERE DO WE GET THE DATA?

- Student Number Identifier, Florida* is used to collect data for CSPR

Dropout Prevention Program
Data Requirements

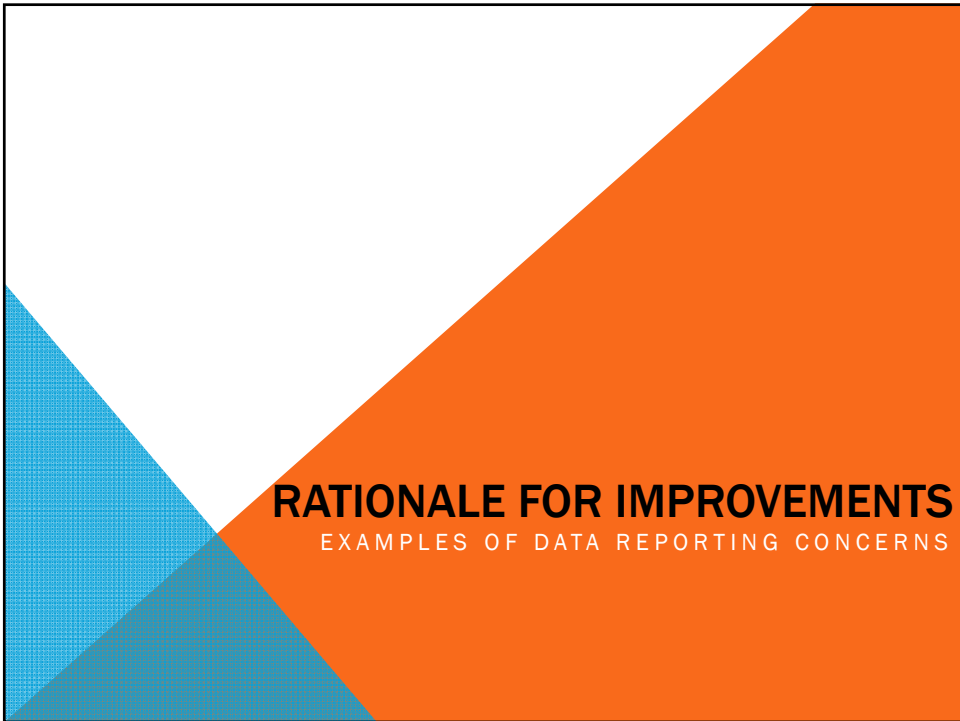
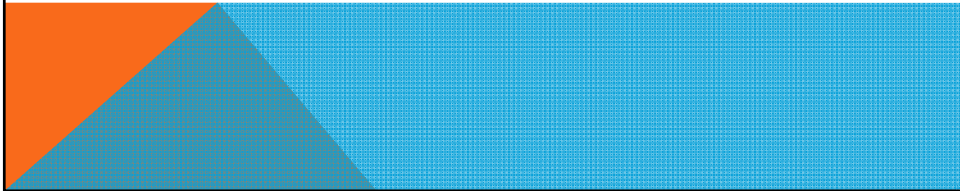
10. KEY FIELDS: The key fields for this format are item numbers 3-5, 7, 12, 13, and 14.

*** indicates key fields.

(Click on the link to view or download a pdf version of the document)

Item No.	From-To	Size	Field Char	Field Description
1	1-2	2	N/R	District Number, Current Enrollment
2	3-6	4	A/N/R	School Number, Current Enrollment
3	7-16	10	A/N	Student Number Identifier, Florida *
4	17-17	1	A/N	Survey Period Code - Always '5' *
5	18-21	4	N	School Year *

Important for
CSPR Data
Collection



ACADEMIC PERFORMANCE IN READING

CSPR 46

Refer to the excel chart, *LEA CSPR Data Reporting Template(Sub 2)*. CSPR 46 indicates the page number for this example.

Performance Data (Most recent testing data)	Neglected Programs	Juvenile Detention	Juvenile Corrections	Adult Corrections	Other Programs
Long-term students who tested below grade level upon entry			58	0	
Long-term students who have complete pre- and post-test results			0	739	

Important Note: "Long-term" refers to students who were enrolled for at least 90 consecutive calendar days from July 1, 2012 through June 30, 2013.

Subpart 1

STUDENTS SERVED

CSPR 49

# of Students Served	At-Risk Programs	Neglected Programs	Juvenile Detention	Juvenile Corrections	Other Programs
Total Unduplicated Students Served	8,781	899	8,057	5,937	0
Total Long Term Students Served	5,543	737	81	3,300	0

Important Note: Department of Juvenile Justice reports 5,492 students served

Subpart 2

TRANSITION SERVICES



Transition Services	At-Risk Programs	Neglected Programs	Juvenile Detention	Juvenile Corrections	Other Programs
Are facilities in your state able to collect data on student outcomes after exit?					
Number of students receiving transition services that address further schooling and/or employment.	0	0	0	0	

Subpart 2

ACADEMIC AND VOCATIONAL OUTCOMES



Outcomes	At-Risk Programs		Neglected Programs		Juvenile Detention		Juvenile Corrections		Other Programs	
	In fac.	90 days after exit	In fac.	90 days after exit	In fac.	90 days after exit	In fac.	90 days after exit	In fac.	90 days after exit
# of Students Who										
Enrolled in their local district school	3,331	2,324	395	281	2,932	1,543	3,012	1,747		
Earned high school course credits	7,781	2,593	706	262	7,117	2,435	5,099	2,325		
Enrolled in a GED program	10	24	1	1	20	46	17	29		
Earned a GED	8	22		4	15	54	104	108		
Obtained high school diploma	21	13	2		7	7	12	8		
Accepted and/or enrolled into post-secondary education	5	8	1		2	10	7	10		
Enrolled in job training courses/programs	1	4			2	4		4		
Obtained employment	230	125	39	12	91	119	103	91		

Subpart 2

ACADEMIC PERFORMANCE IN READING



Performance Data (Most recent testing data)	At-Risk Programs	Neglected Programs	Juvenile Detention	Juvenile Corrections	Other Programs
Long-term students who tested below grade level upon entry	89	37	2	378	0
Long-term students who have complete pre- and post-test results	103	54	0	301	0

Subpart 2

ACADEMIC PERFORMANCE IN READING



Performance Data (Most recent pre/post-test data)	At-Risk Programs	Neglected Programs	Juvenile Detention	Juvenile Corrections	Other Programs
Negative grade level change from the pre- to post-test exams	5	5	0	52	0
No change in grade level from the pre- to post-test exams	64	26	0	154	0
Improvement up to one full grade level from the pre- to post-test exams	22	5	0	52	0
Improvement of more than one full grade level from the pre- to post-test exams	12	18	0	43	0

Subpart 2

ACADEMIC PERFORMANCE IN MATH



Performance Data (Most recent testing data)	At-Risk Programs	Neglected Programs	Juvenile Detention	Juvenile Corrections	Other Programs
Long-term students who tested below grade level upon entry	99	36	3	342	0
Long-term students who have complete pre- and post-test results	108	54	0	297	0

Subpart 2

ACADEMIC PERFORMANCE IN MATH



Performance Data (Most recent pre/post-test data)	At-Risk Programs	Neglected Programs	Juvenile Detention	Juvenile Corrections	Other Programs
Negative grade level change from the pre- to post-test exams	4	5	0	39	0
No change in grade level from the pre- to post-test exams	78	28	0	160	0
Improvement up to one full grade level from the pre- to post-test exams	20	4	0	49	0
Improvement of more than one full grade level from the pre- to post-test exams	6	17	0	49	0

Subpart 2



WAYS TO IMPROVE DATA COLLECTION

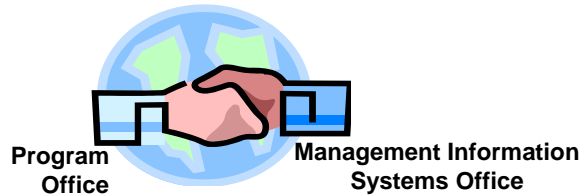
2013-2014 SY

- Step 1** • Complete FDOE template (excel chart) *LEA CSPP Data Reporting Template (Sub 2)*.
- Step 2** • Submit template to FDOE **Friday, July 25, 2014**.
- Step 3** • Compare data collected in student information database via Survey 5 with FDOE template.
- Step 4** • Identify and correct discrepancies in Survey 5.

WAYS TO IMPROVE DATA COLLECTION

2014-2015 and thereafter

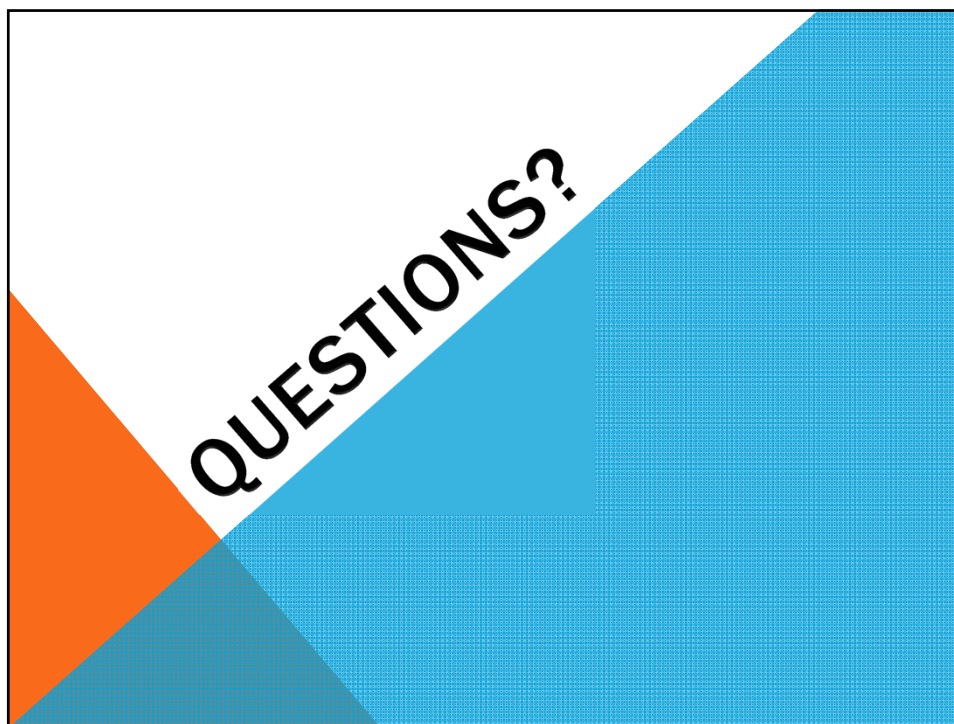
- Implement processes and procedures that include continuous data reporting
- Increase/Improve departmental collaboration



THANK YOU!!!

Because of you we have data!!

But even more, thank you for your dedication and hard work to serve the students that your work impacts each and every day!!



CONTACT INFORMATION

Bureau of Federal Educational Programs
850.245.0479

Melvin Herring, III, Program Director
Melvin.Herring@fldoe.org

Samantha Love, Program Specialist
Samantha.Love@fldoe.org

Colinthia Walker, Administrative Assistant
Colinthia.Walker@fldoe.org

