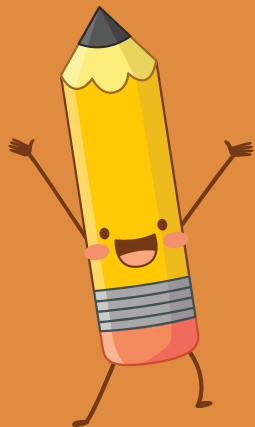


Olympia Heights Elementary

Where Culture Thrives, Students Thrive

Victoria Bourland, Principal
Ariadna Valdes-Hernandez, Assistant Principal



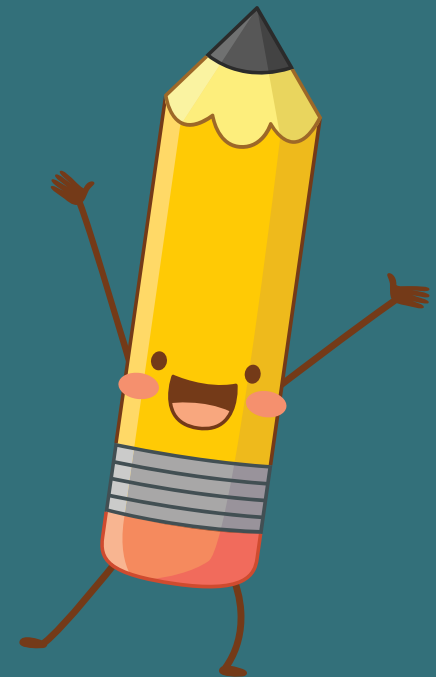
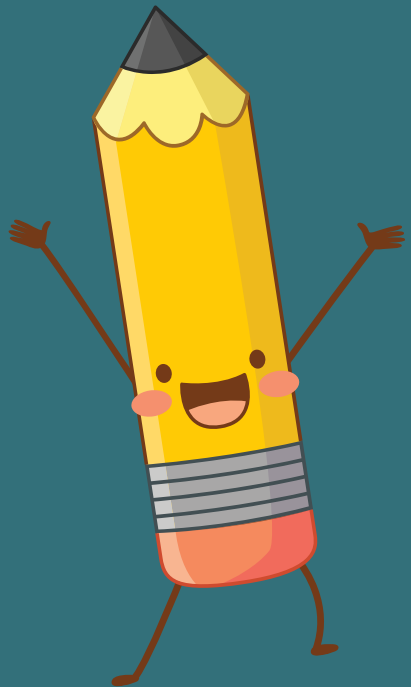
Mission Statement

The goals at Olympia Heights Elementary are designed to enable students to achieve their potential, foster a respect for the cultural heritage of the nation, promote social-emotional learning, and become contributing members of society through a well-rounded education that involves critical thinking, modern technology, and active participation of students, parents, and community members.



Vision Statement

Olympia Heights Elementary provides its students, parents, and community with access to a state-of-the-art comprehensive curriculum designed to support the academic needs and values of all the stakeholders.







It starts with the Opening of Schools

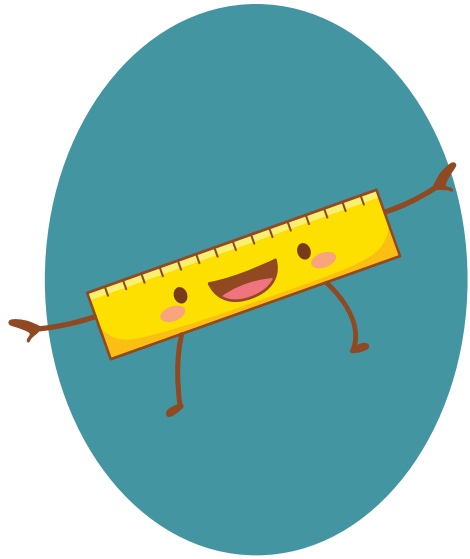




Family Involvement/Recognition

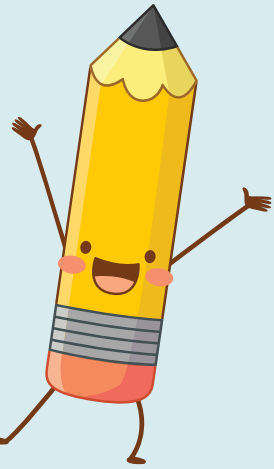
- ❖ Open Door Policy
- ❖ PTA
- ❖ Orientation Meetings
- ❖ The Parent Academy Workshops
- ❖ Fathers in Education
- ❖ Mother's Day
- ❖ Holiday Show
- ❖ Family Resource Center
- ❖ Character Dress Up Day Parade
- ❖ Dojo
- ❖ Grandparents' Day





Student Activities/Recognition

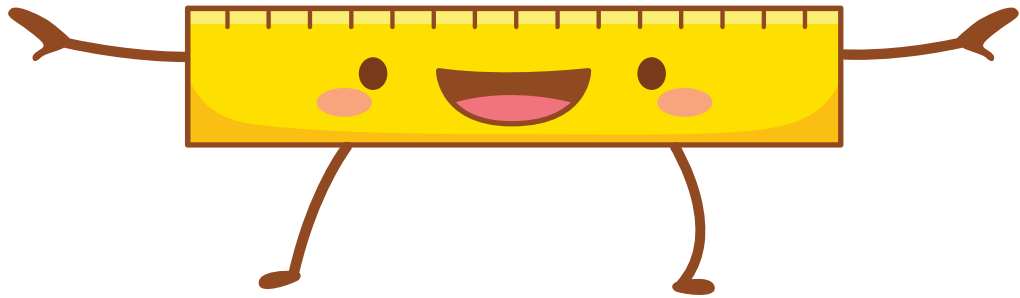
- ❖ Open Door Policy
- ❖ Attendance Lotteries
- ❖ Honor Roll
- ❖ Principal's Honor Roll Luncheon
- ❖ No Homework Coupons
- ❖ Recycling Club
- ❖ WOHE Club
- ❖ Chess Club
- ❖ Fieldtrips
- ❖ Data Chats
- ❖ Values Matter
- ❖ 100 Days of School
- ❖ Buddy Reading
- ❖ Walksafe
- ❖ Dances
- ❖ Science Lab
- ❖ Counseling
- ❖ Dress Down Days





Staff Activities/Recognition

- ❖ Open Door Policy
- ❖ Theme T-shirts
- ❖ Tokens of Appreciation
- ❖ Appreciation Days
 - Custodians
 - Security
 - Cafeteria Staff
 - Crossing Guards
 - Secretaries
 - Teachers/Paras
 - Student Services
- ❖ Needs Assessment
- ❖ Raffles
- ❖ Team Building
- ❖ Perfect Attendance
Leave Early Pass
- ❖ Desserts with
Administration
- ❖ Luncheons
- ❖ Shout Out Board
- ❖ Teacher Mentors



LEAVE EARLY PASS 23-24

Staff Member: _____

Grade Level/Subject: _____

Date requesting to leave early: _____

Approved by: _____



★ TEACHERS & PARAS APPRECIATION WEEK ★ ★ CAMP OLYMPIA HEIGHTS ★



MONDAY

LUMBERJACK BREAKFAST

Enjoy a pick me up breakfast to get your
Weekly Adventure Started
In the office Conference Room
From 7:45-8:30



TUESDAY

IDENTIFYING YOU AS A GREAT TEACHER

We would like to identify you as a Great Teacher.
Thank you for Hanging Out with us all year



We BBQ WEDNESDAY

Because you BELIEVE in the BEST QUALITIES
in children, we want to Honor You with a
BBQ Luncheon
At 2:15pm in the Cafeteria



May 6 - May 10



THURSDAY

FUEL YOUR BODY

Just a token to Quench your thirst.
Fill it up over and over again
ENJOY



FRIDAY



HAPPY TRAILS

You are off to a Great Weekend!

Before you go today
stop by the office, grab a bag
and fix your own Trail Mix

WISHING YOU
A GREAT WEEKEND





Community/Stakeholders Involvement







The PEGASUS Page

"To Teach is to Inspire"



PTA NEWS

Jean Day - 3/8
Kona Ice - 3/14

Happy Birthdays

Ms. Ortiz - 3/10



ACCESS Field Testing Read Across America Week See Something, Say Something Week Data Chats

Monday, March 4, 2024 *Wear your favorite college shirt day*

- 1st Grade & SPED Copy day
- Last day of Class Wallet
- Data Chats- Fernandez, Clark, Vivas, Ortiz and Lopez

Tuesday, March 5, 2024 *Wear your favorite hat day*

- 2nd Grade & Art Copy day
- Data Chats- Gonzalez, Chung, Aleman

Wednesday, March 6, 2024 *Wear backwards or mismatched clothes day*

- 3rd Grade & Music Copy Day
- Ms. Scott- science support - visits
- Faculty Meeting @ 2:15pm
- Data Chats- L. Diaz and Guerrero

Thursday, March 7, 2024 *Wear red and white day*

- 4th Grade & Spanish copy day
- Concord Library Visit- Aleman, Chung and K. Sanchez
- Data Chats- Y. Diaz, Gornail and Valdez

Friday, March 8, 2024 *Wear your GRINCHIEST green day*

- K& 5th Grade copy day
- Data Chats- Imperatori, Grainger



Announcements/ Reminders

- PreK Transition Meeting – 3/12
- 5th Grade Fieldtrip to Southwest – 3/13
- Growth Monitoring – 3/15

Communication is key!



OLYMPIA HEIGHTS ELEMENTARY NEWSLETTER



Principal: Mrs. Victoria Bourland

Assistant Principal: Mrs. Ariadna Valdes-Hernandez

WOMEN'S HISTORY MONTH

March 1st

Read Across America Day

Last Day for the Book Fair

Spring Pictures

March 4-8

Read Across America Week

Say Something Week

March 8

Jean Day

March 13

5th grade fieldtrip to Southwest Senior High School

March 14

Kona Ice

March 20th
Multicultural Day

March 21

Spring Dance

March 22

Teacher planning day/No school

March 25-29

Spring Break/No School

Counselor's message

The value for this month is
COOPERATION

See Something

Say Something Week

March 4-8

The purpose of this week is to recognize warning signs and threats of someone who may be at risk of hurting themselves or others. Say something to a Trusted Adult to get help. Grow a community of Upstanders who look out for one another.

Visit our Title I Resource Center (RM 506)
Information and assistance is offered for programs related to - Title I, PTA, Parent Portal, Free lunch application, Parent Workshops, Parent Volunteer, Florida Kid Care, Free Community Resources.
Mrs. Margarita Hernandez
(305) 221-3821 or (209) 396-5207

FOLLOW US on Instagram:

OlympiaHeightsElementary

Twitter: @Olympiaheights

Website: olympiaheights.net

Olympia Heights Elementary Newsletter

9797 SW 40 street, Miami, FL 33165 *Ph: (305)221-3821 *Fax (305)221-5195 * http://olympiaheights.net

2:36

5G+



Edit profile

Olympia Heights

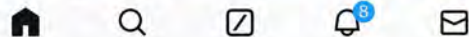
@OlympiaHeights

Joined April 2015

138 Following 722 Followers

Posts Replies Highlights Article

Olympia Heights · 4/18/24
Celebrating amazing male role models today during "Fathers in Education" day!
[@MDCPSSouth](#)
[@SuptDotres](#)



2:33

5G+

olympiaheightselemen...



256 posts 610 followers 5 following

Olympia Heights

[@dadeschools.net](#)

Followed by
[ari_jorgehernandez](#),
[mariteremdcp](#)
and 2 others

Following Message





<https://olympiaheights.net/>

Mrs. Bourland ...

VB Olympia Heights Elementary School · 1 week ago

Good afternoon parents!
Don't forget tomorrow, Wednesday, April 17th, students can wear purple in support of military children.

Translation viewed by 118 parents

♡ 22 likes ◻ 0 co... 311 views

Olympia Heights Elementary				
2024				
Mon	Tue	Wed	Thu	Fri
1 	2	3 	4 B.E.S.T. Writing assessment (grade 5) * Field trip to Fair grounds (Sanchez, Salinetro, Lane)	5 Jeans Day (\$1.PTA) * Hearing screening makeups
8	9 B.E.S.T. Writing assessment (grade 4) Last day of 3 rd grading period	10 Teacher Planning Day - No Classes	11 Last day of after school tutoring First day of 4 th grading period Dress Blue	12 Kona Ice Sale
15 	16 Oral Health screenings FAST PM3 Math-grade 2	17 Dress Purple Parent Academy meeting @ 9a.m. FAST PM3 Reading-grade 2	18 Fathers in Education Day	19 Jeans Day (\$1 PTA)
Early Childhood Week				
22 Earth Day * Park Rangers' visit (grades 2,3,4)	23 Field trip to Moss Center (Sanchez, Salinetro, Lane) * FAST PM3 Math-Grade 1	24 FAST PM3 Reading-Grade 1	25 Take your Daughter and Son to Work Day	26 FAST PM3 Math-KG
29	30 FAST PM3 Reading-KG			

VALUES MATTER: Honesty
Upcoming Testing Dates:
4/25-6/6/24: FAST VPK
4/15-5/31/24: FAST KG-2
4/1-4/12: BEST Writing (4,5)
Child Abuse and Neglect Prevention Month
Financial Literacy Month

Academics

- ❖ Interventionist
- ❖ Monthly Professional Development
- ❖ Math Liaison
- ❖ Reading Liaison
- ❖ Inclusion
- ❖ IND Program
- ❖ Data Chats
- ❖ Walkthroughs
- ❖ ELL Pull-out Program
- ❖ Differentiated Instruction
- ❖ Observational Classrooms

THANK YOU!!!



Victoria Bourland, Principal

- vbourland@dadeschools.net

Ariadna Valdes-Hernandez, Assistant Principal

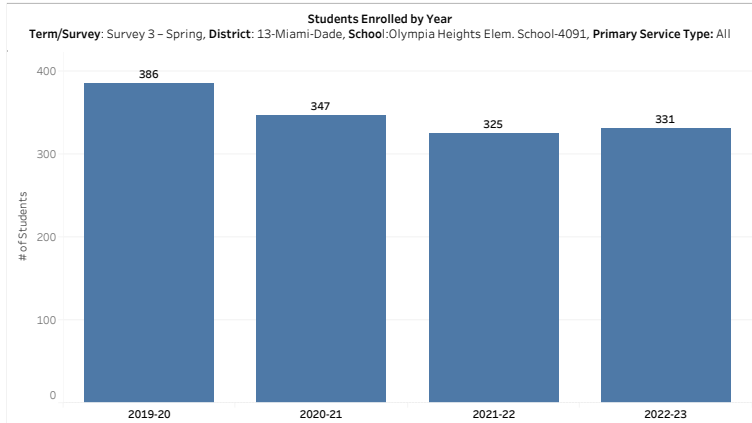
- ahernandez@dadeschools.net

PK-12 ENROLLMENT DEMOGRAPHICS

- Map
- Demographics
- Build A Table

- FLDOE Home
- Advanced Reports Portal
- Definitions
- Help

Filters:
 School Year
 2021-22
 Term/Survey
 Survey 3 - Spring
 District Name
 13-Miami-Dade
 School
 Olympia Heights Elem. School-4091
 Primary Service Type
 All



Race/Ethnicity
 2021-22, Survey 3 - Spring, District: 13-Miami-Dade, School: Olympia Heights Elem. School-4091, Primary Service Type: All

100.0%

- Black
- Hispanic
- White

Charter Status
 2021-22, Survey 3 - Spring, District: 13-Miami-Dade, School: Olympia Heights Elem. School-4091, Primary Service Type: All

100.0%

- Non-Charter

Sex
 2021-22, Survey 3 - Spring, District: 13-Miami-Dade, School: Olympia Heights Elem. School-4091, Primary Service Type: All

50.8% Male, 49.2% Female

- Male
- Female

Economic Status
 2021-22, Survey 3 - Spring, District: 13-Miami-Dade, School: Olympia Heights Elem. School-4091, Primary Service Type: All

88.9% Non-Eco. Disadvantaged, 11.1% Eco. Disadvantaged

- Eco. Disadvantaged
- Non-Eco. Disadvantaged

Current English Language Learner Status
 2021-22, Survey 3 - Spring, District: 13-Miami-Dade, School: Olympia Heights Elem. School-4091, Primary Service Type: All

48.0% Current ELL, 52.0% Not Current ELL

- Current ELL
- Not Current ELL

Disability Status
 2021-22, Survey 3 - Spring, District: 13-Miami-Dade, School: Olympia Heights Elem. School-4091, Primary Service Type: All

18.2% SWD, 81.8% Non-SWD

- SWD
- Non-SWD

Homeless Status
 2021-22, Survey 3 - Spring, District: 13-Miami-Dade, School: Olympia Heights Elem. School-4091, Primary Service Type: All

98.8% Non-Homeless

- Homeless
- Non-Homeless

Migrant Status
 2021-22, Survey 3 - Spring, District: 13-Miami-Dade, School: Olympia Heights Elem. School-4091, Primary Service Type: All

100.0%

- Non-Migrant

Military Family
 2021-22, Survey 3 - Spring, District: 13-Miami-Dade, School: Olympia Heights Elem. School-4091, Primary Service Type: All

100.0%

- Non-Military Family

Notes:
 -When the number of students is less than 10, data are suppressed and noted by an asterisk (*) in the online tool. Suppressed data will appear as a blank in exported files.
 -Economically disadvantaged calculations in this report do not reflect the USDA multiplier for eligible Community Eligibility Provision (CEP) schools. More information about the Community Eligibility Provision can be found at the United States Department of Agriculture website: <https://www.fns.usda.gov/ceip/community-eligibility-provision>. School and district lunch reports with the CEP multiplier applied, if applicable, are located under LUNCH STATUS at <https://www.fl DOE.org/accountability/data-sys/edu-info-accountability-services/pk-12-public-school-data-pubs-reports/students.stm>.

PK-12 ENROLLMENT DEMOGRAPHICS

Map Demographics Build A Table

- FLDOE Home
- Advanced Reports Portal
- Definitions
- Help

Filters:

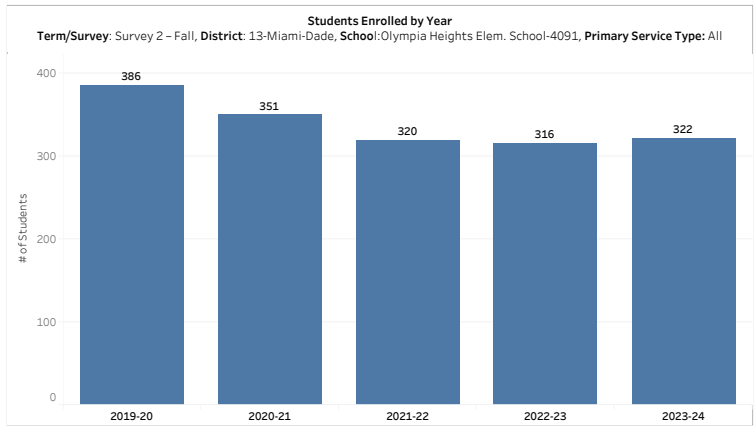
School Year
2023-24

Term/Survey
Survey 2 - Fall

District Name
13-Miami-Dade

School
Olympia Heights Elem. School-4091

Primary Service Type
All



Race/Ethnicity
2023-24, Survey 2 - Fall, District: 13-Miami-Dade, School: Olympia Heights Elem. School-4091, Primary Service Type: All

- Black
- Hispanic
- White

Charter Status
2023-24, Survey 2 - Fall, District: 13-Miami-Dade, School: Olympia Heights Elem. School-4091, Primary Service Type: All

- Non-Charter

Sex
2023-24, Survey 2 - Fall, District: 13-Miami-Dade, School: Olympia Heights Elem. School-4091, Primary Service Type: All

- Male
- Female

Economic Status
2023-24, Survey 2 - Fall, District: 13-Miami-Dade, School: Olympia Heights Elem. School-4091, Primary Service Type: All

- Eco. Disadvantaged
- Non-Eco. Disadvantaged

Current English Language Learner Status
2023-24, Survey 2 - Fall, District: 13-Miami-Dade, School: Olympia Heights Elem. School-4091, Primary Service Type: All

- Current ELL
- Not Current ELL

Disability Status
2023-24, Survey 2 - Fall, District: 13-Miami-Dade, School: Olympia Heights Elem. School-4091, Primary Service Type: All

- SWD
- Non-SWD

Homeless Status
2023-24, Survey 2 - Fall, District: 13-Miami-Dade, School: Olympia Heights Elem. School-4091, Primary Service Type: All

- Homeless
- Non-Homeless

Migrant Status
2023-24, Survey 2 - Fall, District: 13-Miami-Dade, School: Olympia Heights Elem. School-4091, Primary Service Type: All

- Non-Migrant

Military Family
2023-24, Survey 2 - Fall, District: 13-Miami-Dade, School: Olympia Heights Elem. School-4091, Primary Service Type: All

- Non-Military Family

Notes:
 -When the number of students is less than 10, data are suppressed and noted by an asterisk (*) in the online tool. Suppressed data will appear as a blank in exported files.
 -Economically disadvantaged calculations in this report do not reflect the USDA multiplier for eligible Community Eligibility Provision (CEP) schools. More information about the Community Eligibility Provision can be found at the United States Department of Agriculture website: <https://www.fns.usda.gov/ceip/community-eligibility-provision>. School and district lunch reports with the CEP multiplier applied, if applicable, are located under LUNCH STATUS at <https://www.fl DOE.org/accountability/data-sys/edu-info-accountability-services/pk-12-public-school-data-pubs-reports/students.stm>.